

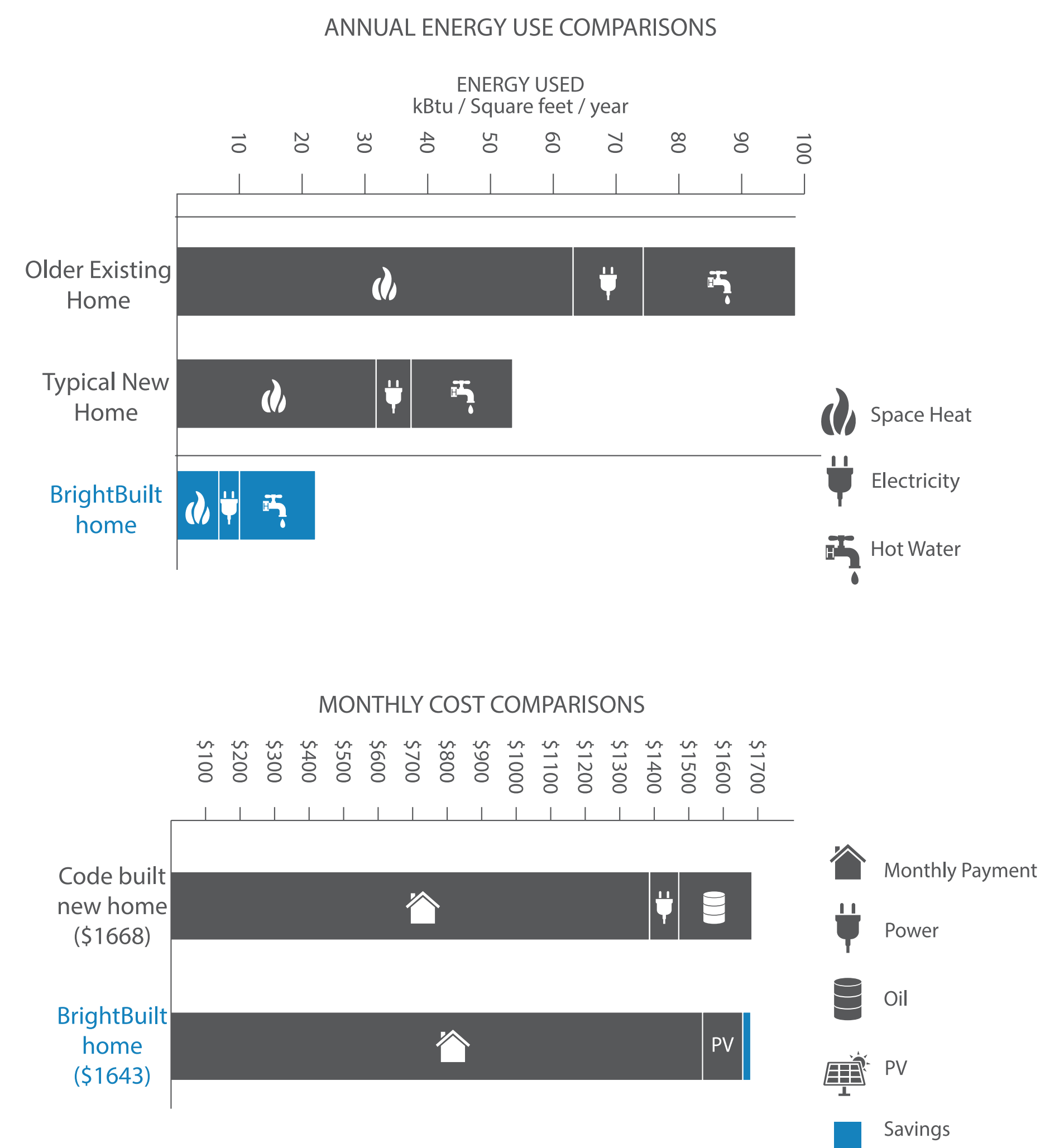
LIVE BEAUTIFULLY

LIVE SMART

BOSTON MAGAZINE'S

DESIGN HOME

2014



HOW ARE BRIGHTBUILT HOMES UNIQUE?



AFFORDABLE

- Architect-designed
- High-performance homes
- Priced to offer substantial savings
- Can be delivered in less time



HIGHER INSULATION VALUES

- Air tight construction
- Walls = R-40
- Roofs = R-60
- Slabs and Foundation walls = R-20 & R-10
- Blower door tested to verify



LESS ELECTRICITY

- Energy-efficient construction
- Energy-efficient appliances/lighting
- Solar electric systems
- Reduced or eliminated utility costs



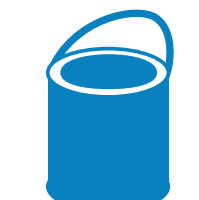
SOLAR GAIN

- More comfortable and temperate
- Uses time-tested components
- Less wear-and-tear
- Optimized windows for natural ventilation



DRAFT-FREE

- High solar-gain glazing
- Comfortable temperatures near glazing



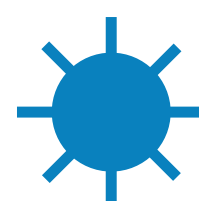
LOW VOC COMPOUNDS

- Healthier for you and your family
- Minimum levels of toxicity
- Improved indoor air quality



LESS WATER

- Low flow and low volume fixtures
- All fixtures will at minimum meet LEED efficiency standards



RENEWABLE ENERGY

- Photovoltaics
- Hedges against future fuel costs



ENERGY STAR APPLIANCES

- Designed by the award-winning firm Kaplan Thompson Architects
- Various delivery options:
 - Modular
 - Conventional
 - Just plans



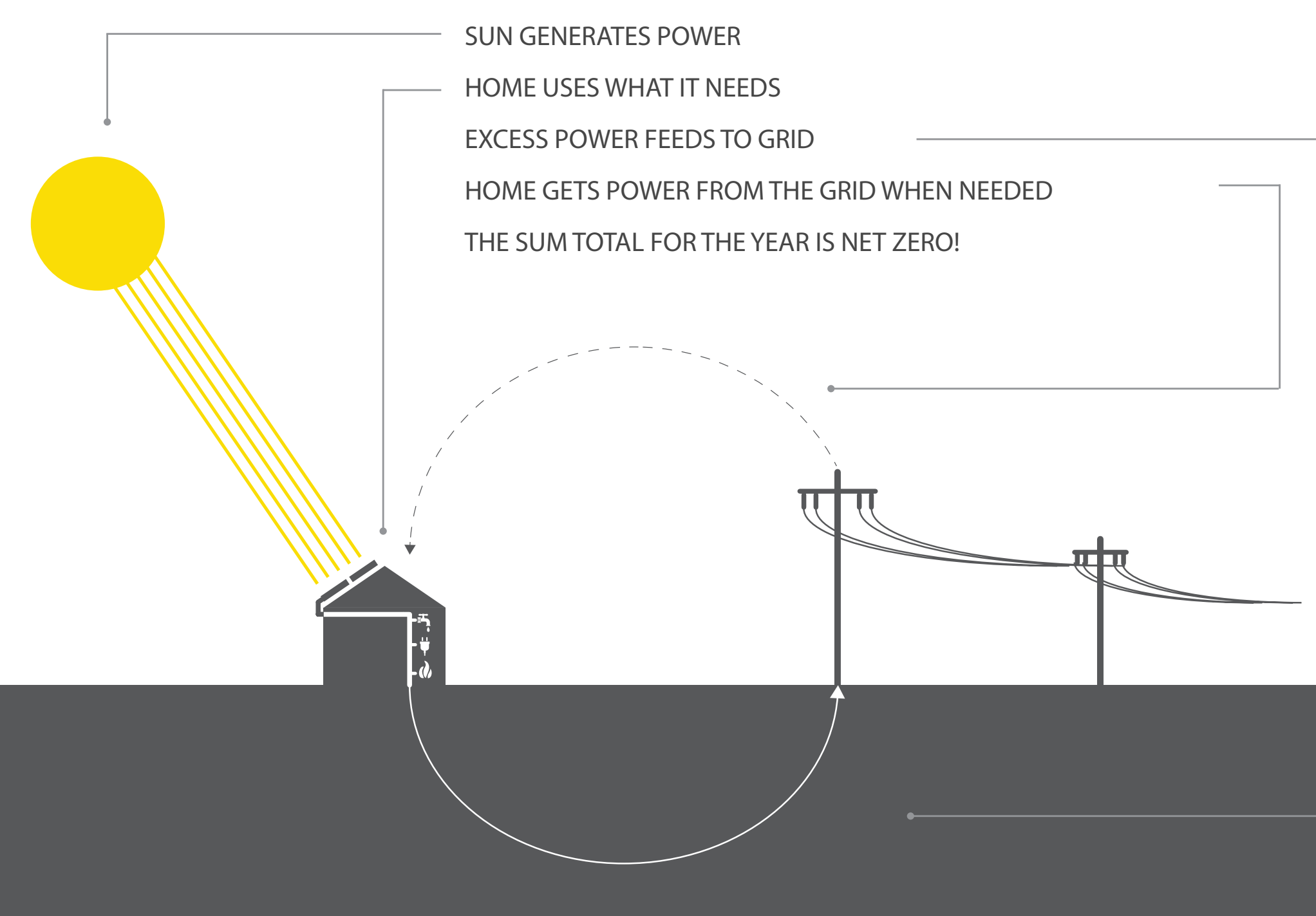
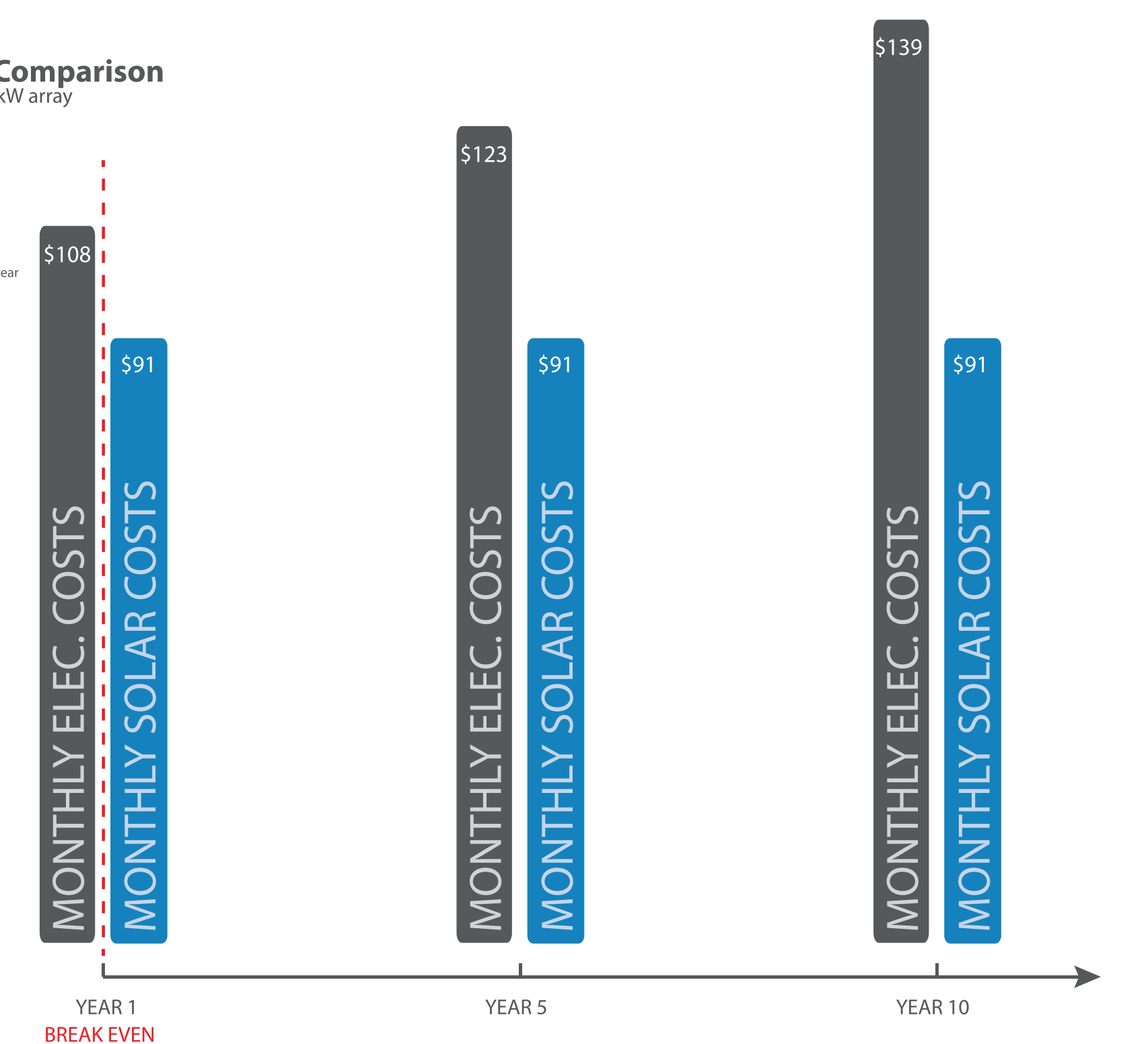
CUSTOMIZABLE

- Energy Star appliances
- No gas or propane powered appliances

Solar Cost Comparison

True cost of a 6.5 kW array
Boston, MA

- Solar cost/month: \$2,700/kW, 5% at 30 years
- Elec. cost/month: \$ 0.20/kWh, Inflation at 2.5%/year



LIVE BEAUTIFULLY

LIVE SMART

BOSTON MAGAZINE'S

DESIGN HOME

2014

HOW DO BRIGHTBUILT HOMES WORK?

MECHANICAL SYSTEMS

AIR SOURCE HEAT PUMPS

- Heat & cool
- Highly efficient
- Require minimal power

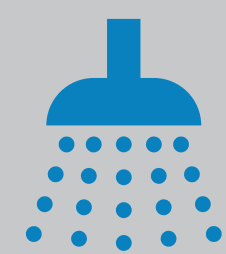
HOT WATER HEATERS

- Super insulated or heat pump units
- Power requirements reduced when compared to standard electric units

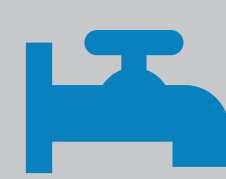
WATER EFFICIENCY



- 1.6 GPF max
- Dual flush toilets



- 1.5 GPM max at showerheads
- Low flow fixtures



- 1.5 GPM max in bathrooms

COMMISSIONING



- Blower door testing is required.
- All BrightBuilt Homes must meet 1.5 air changes per hour (ach) – (or less) – at 50 pascals air pressure

ADDITIONAL FEATURES OF THIS HOME

SOLAR ARRAY

- 8.83 kW system by SunBug Solar
- Projected Payback = 4-5 Years
- 30 year electrical savings: \$82,364
- Projected to produce 104% of electricity needs annually

MONITORING

- Circuit-level energy monitoring system by PowerWise
- Helps owners understand and manage electricity use

HOT WATER

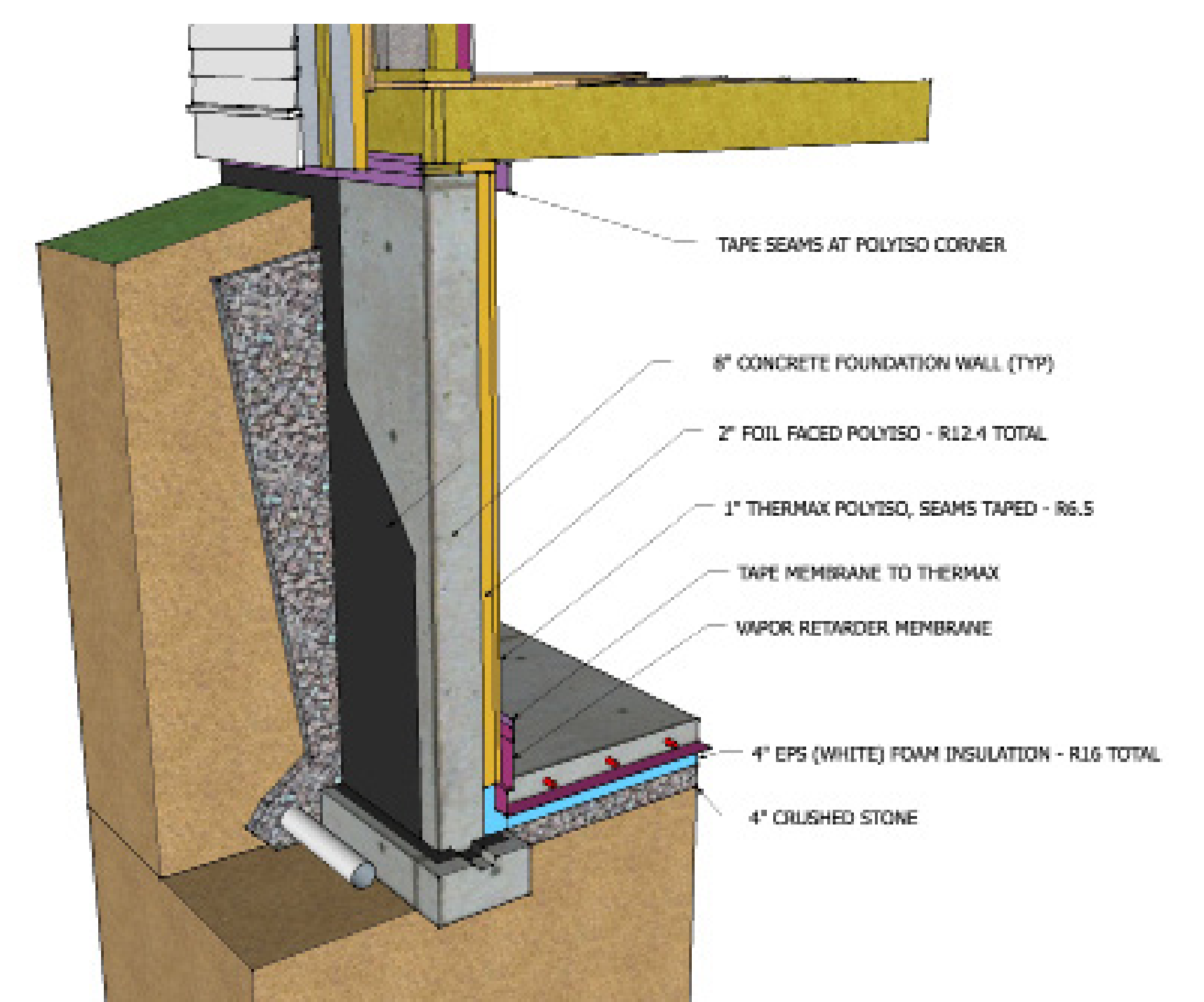
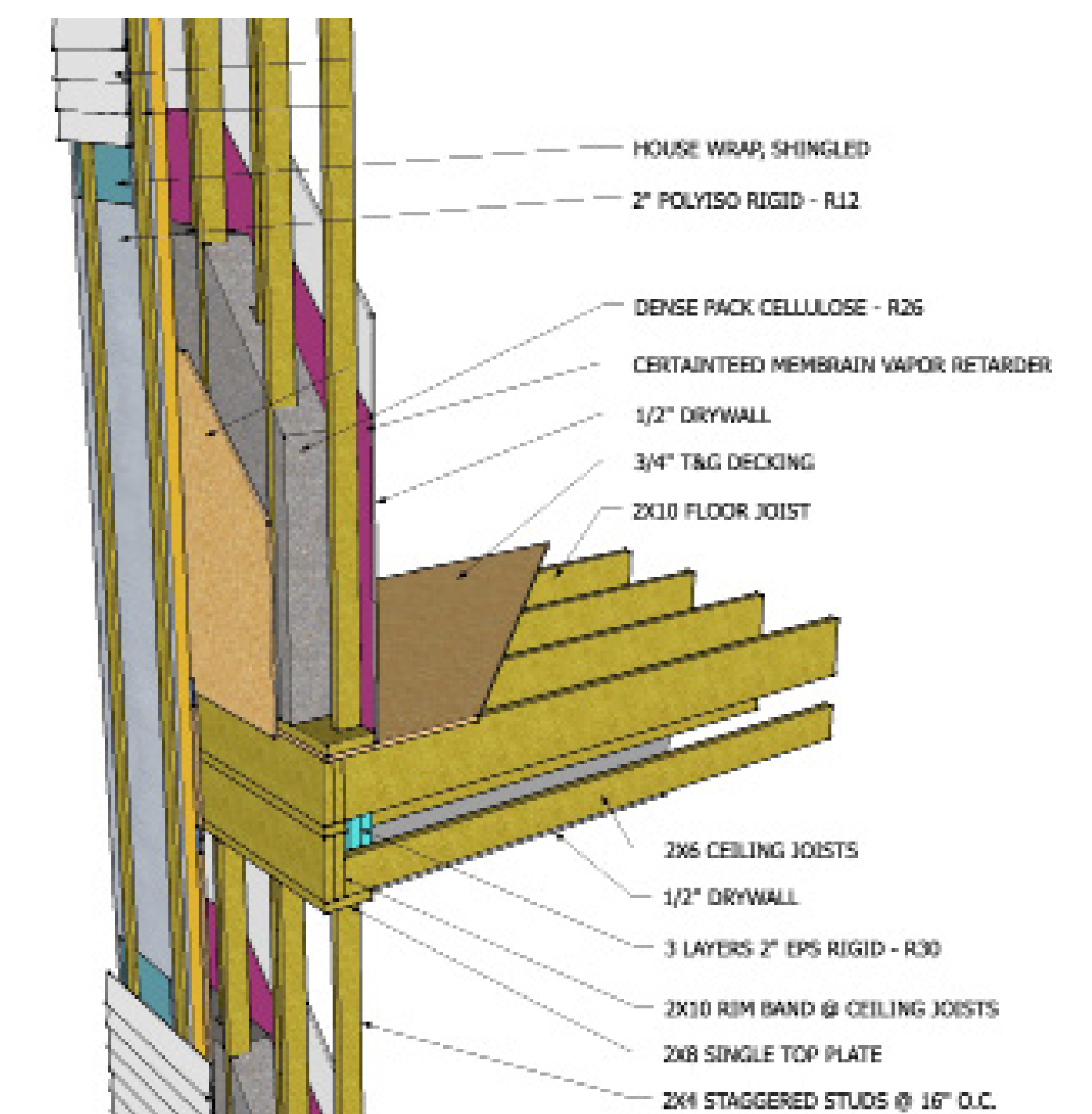
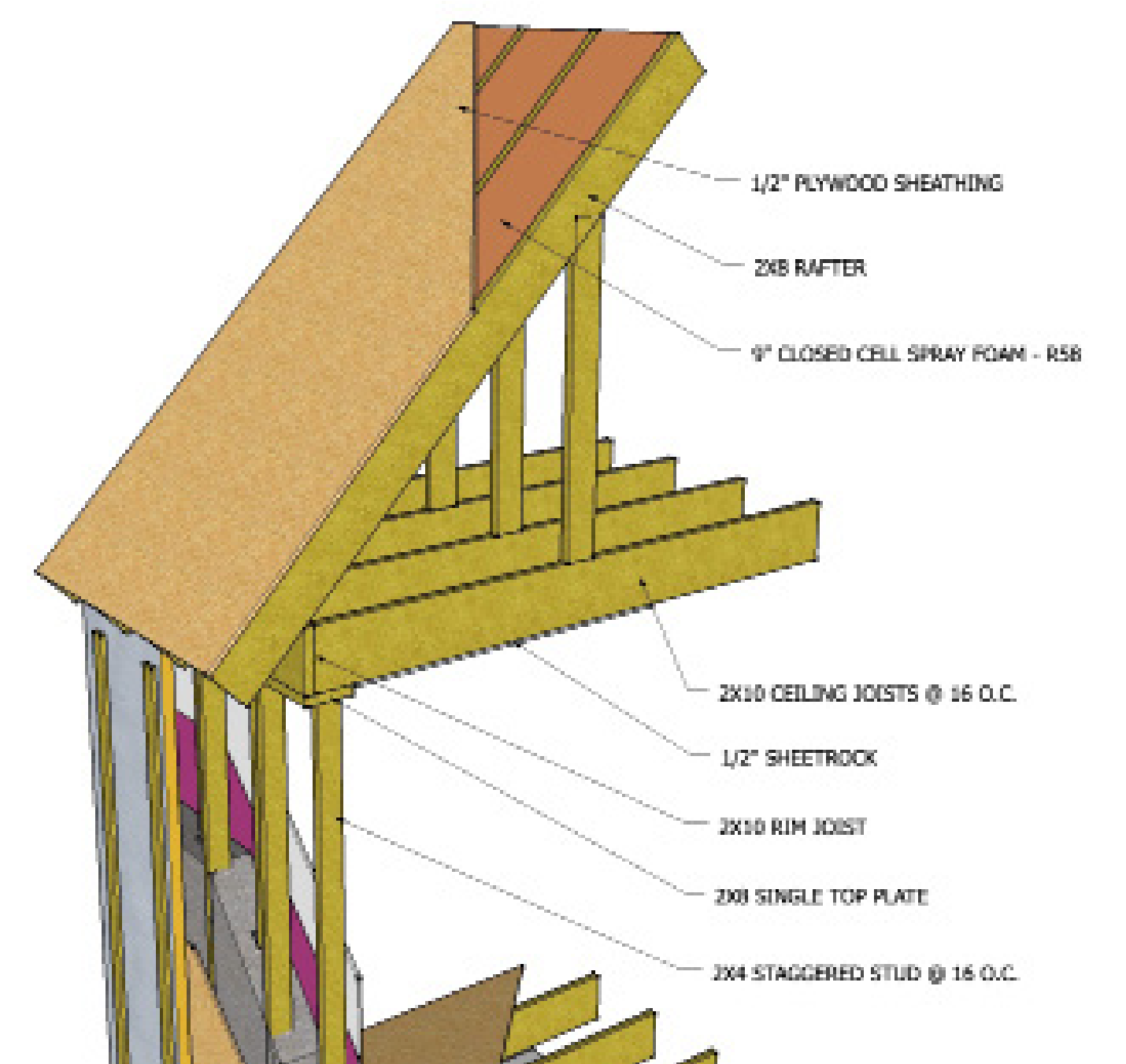
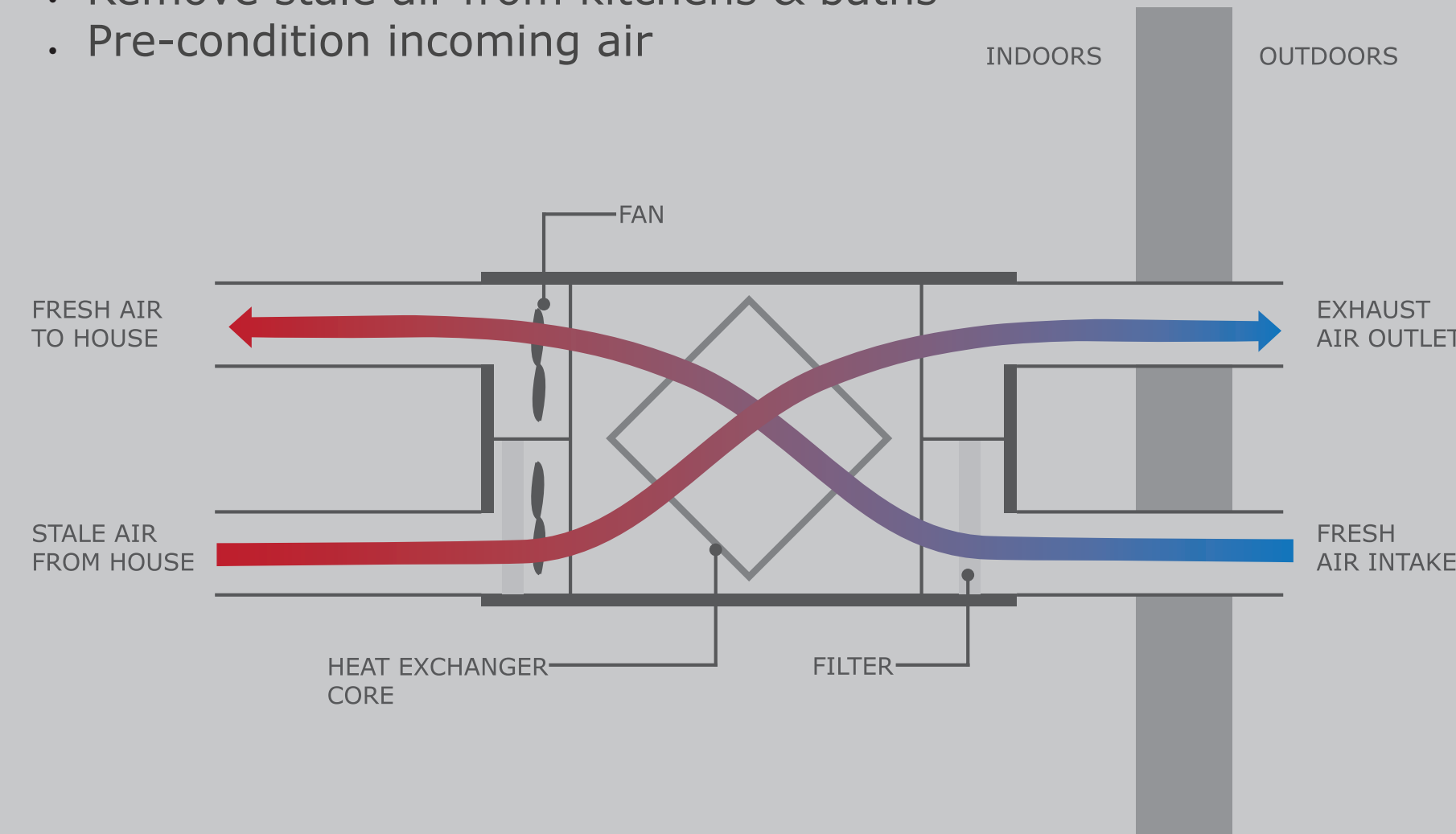
- Heat pump hot water heater by A.O. Smith
- Uses 1/3 the energy of an efficient resistance HW heater
- Doubles as a basement dehumidifier

RADIANT FLOORS in BATHROOMS

- Electric floor mats under bath tile, by NuHeat
- Provide supplemental heat for upstairs bathrooms
- Heat is evenly distributed & efficient

HEAT RECOVERY VENTILATORS

- Provide fresh air to the living spaces
- Remove stale air from kitchens & baths
- Pre-condition incoming air



ENVELOPE

A super-insulated, well-sealed envelope is critical to the performance of every BrightBuilt Home.

HIGHER INSULATION VALUES